


How does your garden grow?

Sticky Knowledge (from Year 1 and 2)

seedling	A young plant
germinate	The process of a seed developing.
bulb	A bulb is structurally a short stem with fleshy leaves or leaf bases that function as food storage organs during dormancy.
mature plant	Has a strong stem and healthy leaves.

What do the parts of the plant do?



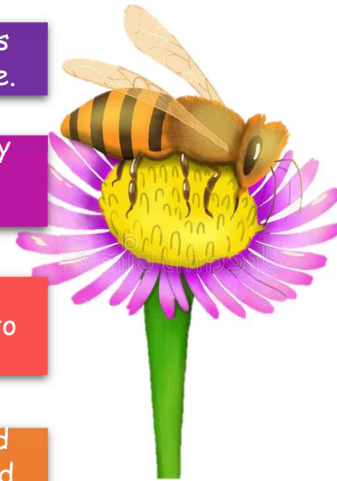
The **leaves** use a process called **photosynthesis** to produce food for the plant. They use **light, water and carbon dioxide** to do this.

The **stem** transports water and nutrients to all parts of the plant.

The **roots** take up water and nutrients from the soil. They also keep the plant in the ground.




How do bees pollenate plants?

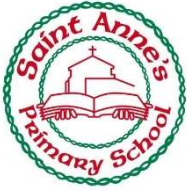
1. The flower's bright petals and fragrant scents attract bees.
2. The bee arrives on the flower to collect nectar. This nectar is a sweet liquid which makes perfect food.
3. As the insect is gathering the nectar, it rubs against the anthers, which rub pollen on the bee.
4. After the bee is done feeding, it gets hungry and is attracted by another flower's bright colours.
5. As the bee feeds on the nectar of the new flower, the pollen stuck to the bee rubs off onto the stigma of the second flower.
6. Part of this pollen travels down the style and then into the ovary. The flower is now pollinated.



Types of seed dispersal

- Wind
- Water
- Catching on animals
- Bursting
- Shakers
- Dropping from other plants/tree
- Seeds as food

	Floats Through the Air
	Flies Through the Air
	Dispersed by Water
	Bouncing and Rolling
	Eaten by Animals
	Stored by Animals
	Thrown Explosively
	Carried on an Animal's Body

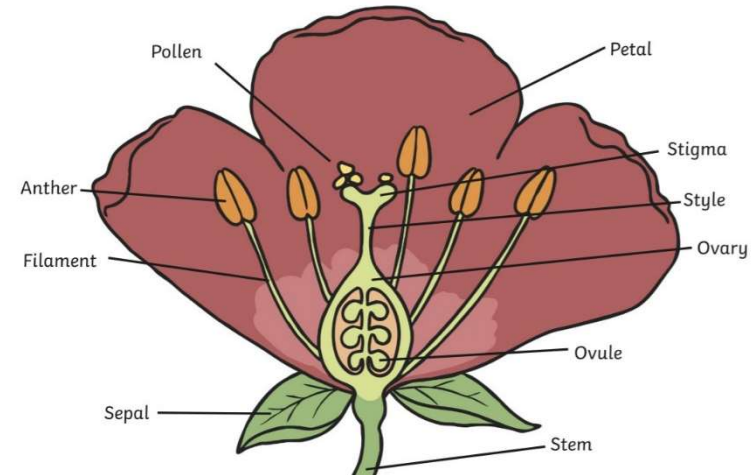


Year 3 Knowledge Organiser Spring Two

How does your garden grow?

Vocabulary	
nutrients	A substance like water that provides nourishment for growth.
pollination	the transfer of pollen to a stigma, ovule, flower, or plant to allow fertilization.
seed formation	When the seed completes the process of reproduction into a plant.
seed dispersal	The movement or transportation of seeds from the parent plant.
stamen	The male part of a plant. Consists of the anther(produces pollen) and the filament (holds the anther up)
sepal	Protects the flower bud as it develops.
carpel	Female part of the plant. Consists of the stigma, style and the ovary.
petal	Coloured and shaped to attract insect pollinators.

Cross-section of a flower



Life cycle of a plant

