

**SAINT ANNE'S  
CATHOLIC  
PRIMARY SCHOOL**



# OUTSTANDING IN ALL FIVE AREAS

**OFSTED, 2025**

*“Each one of us is unique, each one of us is special, because we are created by God's love. May God's love shine on our lives as we care, share and learn together.”*  
— Our Mission Statement

## START YOUR JOURNEY WITH US

-  0121 779 8060
-  [www.stannessolihull.co.uk](http://www.stannessolihull.co.uk)
-  Bosworth Drive, Chelmsley Wood, B37 5DP



**“Everyone is unique and special at Saint Anne’s, so say leaders, staff, pupils, parents and carers” - Ofsted 2025**



# SAINT ANNE'S CATHOLIC PRIMARY SCHOOL



If you had a magic wand and you could change anything about your school, what would it be?

*"I would give the magic wand to another school to help them become more like our school."*

*- Harry in Year 6*

Following our March 2025 Ofsted inspection, we are proud to be judged Outstanding in every category!

## OUTSTANDING IN:

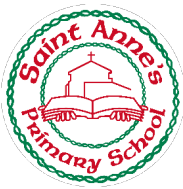
- QUALITY OF EDUCATION
- BEHAVIOUR AND ATTITUDES
- PERSONAL DEVELOPMENT
- LEADERSHIP AND MANAGEMENT
- EARLY YEARS PROVISION

## WHAT OFSTED SAID

A few highlights from our glowing report:

- "Pupils love their school and the amazing opportunities on offer."
- "Leaders have very high ambitions for all... this is why pupils excel."
- "Pupils behave exceptionally well and have very positive attitudes to their learning."
- "Children in Reception get off to a rapid start to learning to read."
- "The school has designed an exceptionally ambitious curriculum that is expertly taught."
- "Pupils thrive on leadership responsibilities."
- "The school ensures that all pupils feel they belong. They show very high levels of respect for others from different faiths or backgrounds. "





# ST. ANNE'S CATHOLIC PRIMARY SCHOOL

HEADTEACHER: Mr D Linehan

Bosworth Drive, Chelmsley Wood, Birmingham, B37 5DP

Tel: 0121 779 8060 Email: parentmail@st-annes.solihull.sch.uk

Website: <http://www.stannessolihull.co.uk> Follow us on Twitter: @StAnnesCP



**St. Anne's Mission Statement: "Each one of us is unique, each one of us is special, because we are created by God's love. May God's love shine on our lives as we care and share and learn together."**

Friday 16th May 2025

## CATHOLIC LIFE

In our Liturgical Calendar we are currently in Easter Time

### School Virtue for this half term – Compassionate & Loving

*Pupils in St Anne's are growing to be . . . Compassionate towards others, near and far, especially the less fortunate; and loving by their just actions and forgiving words. Our school helps our pupils to grow . . . By being compassionate and loving in the way pupils are treated, especially when a pupil is in trouble; and by opening pupils' eyes to those who suffer poverty, injustice or violence.*

### The half term focus for Catholic Social Teaching is: 'The Dignity of Work'

*The Dignity of Work -Everyone's work is of value. There are many kinds of work. In each job, workers deserve to be treated with respect; work safely; work reasonable hours, and earn fair wages. They deserve this because they are made by God. Our work gives us the means to live, but it is also a chance to use the talents God gives us. Our work is our way of cooperating with God to help create a better world.*

## RE INSPIRE PARENT WORKSHOPS

Please find the dates below for this academic years remaining RE Inspire Parent Workshops.

Year Group	Relevant RE Unit	Date Time 8.50am
Reception	St Anne	Tuesday 20 <sup>th</sup> May (Change of date)
1	Following Jesus Today	Monday 23 <sup>rd</sup> June
2	Parables and Miracles	Monday 16 <sup>th</sup> June
5	Pentecost	Wednesday 21 <sup>st</sup> May (Change of date)

**All RE Inspire workshops will include a focus on the Jubilee Year of hope alongside the theme.**

## DATES FOR YOUR DIARY – AFTERNOON PRAY AND STAY FOR PARENTS

Please arrive at church no later than 1:40pm, to begin prayer at 1:45pm. We look forward to welcoming you all.

Date	Year Group
Friday 2 <sup>nd</sup> May	5
Friday 9 <sup>th</sup> May	4
Friday 16 <sup>th</sup> May	3
Friday 6 <sup>th</sup> June	2
Friday 13 <sup>th</sup> June	1
Friday 20 <sup>th</sup> June	Reception
Friday 27 <sup>th</sup> June	6

## YEAR 6 – WE ARE SO PROUD OF YOU!

We are immensely proud to announce that our Year 6 children have successfully completed their SATs! This milestone encapsulates the hard work, resilience, and perseverance that your children have demonstrated throughout this academic year.

Over the past few months, we have witnessed their determination soar, their journey has been one of growth and discovery. We are particularly impressed by how they supported each other, celebrating successes and encouraging one another during tougher times.

Let us take this moment to celebrate their hard-earned success. Thank you for your unwavering support, which has contributed significantly to their confidence and progress. Here's to their bright futures! We are so proud of you.

**Here is a picture of the children in their new hoodies! They are delighted with them. The children can wear the hoodies on PE days.**



## ALTON CASTLE MEETING

On Thursday 22<sup>nd</sup> May at 8:50am, there will be a short, informative meeting ahead of the Alton Castle Trip. During the meeting there will be a short presentation and a booklet of information to takeaway with necessary details for the upcoming trip.

## PARKING

Please remember that there is no parking available in the School grounds or outside the school gates for families. All families are expected to park at Asda or the Church when bringing children to/collecting children from school. This also applies when bringing children to school late, collecting early or dropping things off for them.



The on-site car park is for school staff and Blue Badge holders only.

Please do not use the approach to school as a drop off point as this leads to congestion and can be very dangerous for pedestrians. The school does own this land or the parking spaces outside of the school gates.

Parents are to also be mindful when parking on Nine Acres Drive and respectful to the residents on the road. If you are bringing your children in through that gate, please make sure that you are parked correctly and not blocking any residential drive ways, or blocking the road resulting in other cars not being able to make their way down.

We would really appreciate the support of all of our families on this matter. Please also ensure you inform other family members/friends who bring and/or collect your children too.

### PUPIL ACHIEVEMENTS

Kyra, Iggy and Tilly from 4P attended the Art Exhibition in Solihull to celebrate all their hard work in Art Club and their contributions to the Solihull Exhibition.



### ACTIVE HOMEWORK AND SPORTING ACHIEVEMENTS – WELL DONE CHILDREN!

Emilia 10'C – Karate

Well done Emilia for being graded with the red and white belt!

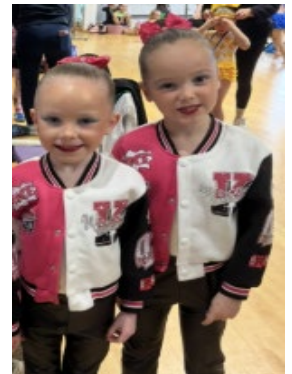
Emilia has also already again her white, white and orange and had now received her white and red belt! We are so proud of you.



A big well done to Cameron and Isabella in Class RL who both received trophies for their excellent football skills. A big well done to you both! Isabella also received her red belt this week in Karate. Super ways to stay active!



A big well done to Amelia and Harper in Year 2 who performed to two sell out audiences this weekend at the Dovehosue Theatre. They showed their wonderful dancing skills to their friends and family. Well done to you both!



## PERSONAL DEVELOPMENT

# VOTES FOR SCHOOLS

In last week's votes the children answered the following topic question:

- Should we be worried about nicotine pouches? (9-11)
- Do you feel confident looking after your teeth? (5-9)



May is a special month in the Catholic Church, dedicated in a particular way to honouring the Blessed Virgin Mary. Throughout this month across school we deepen our devotion to our spiritual mother, who always leads us closer to her Son, Jesus. Blue flowers and material has been added to focal points and prayer areas throughout school to symbolise Mary's purity and heavenly grace. School and classes will join together in praying the Rosary, reflecting on the mysteries of Christ's life through Mary's eyes. Hymns will fill the air, drawing hearts into prayerful celebration of our Blessed Mother's love and intercession.



**MENTAL  
HEALTH**  
AWARENESS WEEK  
MAY 15-21

Thursday was the start of Mental Health Awareness. Children will be exploring the importance of mental health and wellbeing. Through age-appropriate activities and discussions children will learn how to understand and talk about their feelings, support one another, and build healthy habits for both mind and body. It is important to highlight the value of kindness, resilience, and self-care. Mental Health Awareness Week is a wonderful opportunity to empower our pupils with the tools they can carry with them every day, in and out of the classroom.

**National sun awareness week**

During National Sun Awareness Week, we encourage and promote the following sun safety practices:

- **Use Sunscreen:** Apply a broad-spectrum sunscreen with an SPF of at least 30.
- **Seek Shade:** Avoid direct sun exposure, especially between 10 a.m. and 4 p.m., when UV rays are strongest.
- **Wear Protective Clothing:** Use hats, sunglasses, and long-sleeved clothing to shield the skin.
- **Stay Hydrated:** Drink plenty of fluids to prevent dehydration
- 



**MAY PROCESSION**

This week, the children took part in a special celebration in honour of Our Lady, Mary. The children showed great respect, listened attentively, and sang with real enthusiasm. Together, we reflected on why Mary is such an important figure in our faith. We shared key Bible stories, including the Annunciation and the Wedding at Cana, where the children learned how Mary placed her trust in God and demonstrated strong faith. A highlight of the celebration was singing “Hail Mary” using sign language, along with the joyful hymn “Mary’s Love is Very Wonderful.”

Following the liturgy, the children processed quietly to the prayer garden to music. There, they gently laid flowers around the statue of Mary, prayed the Rosary and ended by crowning Our Lady, continuing a meaningful tradition. Once in the classroom, children decorated a flower whilst reflecting on the words heard in in our liturgy, they then chose one word to describe Mary. These were then placed around our classroom focal points dedicated to Mary. Staff were proud of the children’s thoughtful participation in what was a peaceful and reflective occasion.



## Endangered Species Day

This week the children have celebrated Endangered Species Day. The children learnt that there are different levels of endangerment ranging from least concern to extinct. Each year group focussed on a different endangered animal and discussed ways in which we can help to try to save this species. In KS1, the children all watched a video about different endangered animals, whilst KS2 looked at a video of David Attenborough talking about endangered species and protecting our world. The children enjoyed looking at fun facts associated with their animals too! Reception looked at Sea Turtles, Year 1 looked at Giant Pandas and even looked at a live web cam of these special creatures, Year 2 looked at Blue Whales, Year 3 looked at Polar Bears, Year 4 looked at Bengal Tigers, Year 5 looked at Rhinos and finally Year 6 looked at Elephants.

Have a look at some of the children discussing this special event.



## NURSERY

### Religious Education

In RE the children are learning about special celebrations, they spoke about their own experiences of celebrations e.g. birthdays, Christmas and Baptism. The children know that each Sunday people gather in Church to celebrate together. This week the children visited St. Anne's Church and listened to the Bible story 'The Wedding at Cana'.



## Literacy

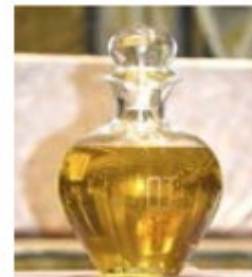
In Read Write Inc phonics the nursery children have learnt five new letter sounds this week m, a, s, d, t. They can use my turn, your turn.



## RECEPTION

### Religious Education

This week we started our unit of work on Baptism. We enjoyed looking at pictures of Mrs Lewis' and Miss Holyland's children's Baptisms and discussing the special events that take place during this sacrament. We looked at different Baptismal artefacts and symbols we have explored at church and discussed the special Christian names we were given at Baptism.



### Maths

We have been exploring numbers beyond 10. We played a game with our partners where we built numbers past ten and challenged our partners to reliably count them. We also played different games in the provision based on numbers past 10, sang songs and composed numbers using different manipulatives.

### Literacy

We are enjoying our Talk for Writing text "The Little Red Hen" The children enjoyed acting out the story in the small world tray and watching their teachers perform the story. We also created a class story map and shared the story with our friends. The children have amazed us with their super recall of the story and actions. A huge well done! Follow this link to practise the story at home. [Pie Corbett telling the Little Red Hen Story](#)



## YEAR 1

### Religious Education – Prayer Garden

As part of our RE learning this week, the children took part in a creative project to design their own prayer gardens in celebration of the special Jubilee year. They reflected on what would make a meaningful and peaceful space for prayer and chose to focus on the theme of hope – a message we felt was important for our whole school community. Each child designed a unique garden that included thoughtful features such as prayer garden names, flowers, statues, seating areas, water features, and scripture verses. These elements were carefully chosen to help create a calm, inspiring space where people could feel closer to God and supported in their faith journey. The children showed great imagination and understanding of what a prayer garden could offer. Their designs were both beautiful and purposeful, reflecting a deep sense of spirituality and creativity. It was a lovely opportunity to explore faith through art and think about how we can build spaces that encourage reflection and hope.



### PE – Health and Fitness

We explored how exercise helps our brains stay healthy and alert, especially when it comes to concentrating and working with numbers. Our warm-up had us leaping, running, and throwing while shouting out number patterns in 2s, 5s, and 10s. It was fast-paced, and definitely got us thinking and our hearts racing. We then played a Number Hunt, where we teamed up to find hidden numbers under cones. It wasn't just about speed—it was about teamwork, and remembering those number patterns. We learned that moving our bodies can help us learn better too, and had lots of fun doing it!



## YEAR 2

### Religious Education

In RE this week, we have continued to reflect on Mary during this special month of May. The children have been using our class set of Rosary beads to pray a decade of the Rosary together. Through this prayer, they are learning how the Rosary helps us to think about the important events in the lives of Jesus and Mary.

We've discussed how praying the Rosary in May is a special way to say "thank you" to Mary for her love, care, and her inspiring example of faith. It also helps us grow closer to Jesus through His mother. The children have also explored how taking time to honour Mary encourages us to follow her example of trust, kindness, and love in our own lives.

It was lovely to see the children pray part of the Rosary during our May Procession this week, as we crowned Mary and celebrated her with reverence and joy.



### PSHE

This week in PSHE, Year 2 have been exploring the theme "God has a plan for us". We've been learning about the different stages of life and how we grow and change over time — from baby, to toddler, child, teenager, and adult.

The children enjoyed creating a timeline and matching pictures to each stage of life, helping them understand how we all grow in our own special way.

We've also started a fun activity where the children bring in baby photos of themselves — there's been lots of excitement and giggles as we prepare for a game of "Guess Who?" in our next lesson. It's a wonderful way to celebrate how far they've come and how unique each of their journeys is!



### YEAR 3

#### Child-Led Celebration of the Word

This week, our Year 3 prayer leaders came together with great thought and care to prepare a beautiful *Celebration of the Word*, centred on the Feast Day of Our Lady of Fatima. Earlier this year, Fatima was chosen by Year 3 as their special pilgrimage destination as part of our Jubilee celebrations, making this a particularly meaningful and fitting focus for their worship.

With reverence and confidence, Ted, Cruz, Olly, Alina, Evelyn, and Anna led the service, guiding us through reflections, prayers, and readings that helped deepen our understanding of Mary's message at Fatima. On Friday afternoon, the children had the joy and privilege of sharing their celebration with families and parish, creating a truly memorable and prayerful moment for all who attended.



#### Talk 4 Writing – Troll on the Loose!

Mr Linehan delivered a very important letter addressed to the Year 3 classes from the Solihull Council warning us about a troll living under a bridge by ASDA. They asked us to investigate, so we put our detective hats on and explored outside. We found a disgusting trail of green slime and a note left by the Troll! The troll warned us not to follow the trail any further and to definitely not go tip tapping over his bridge! We rushed back to class and wrote a letter back to the Council explaining our discovery! We used thesaurus' to research the perfect adjectives to describe what we had found! We included lots of expanded noun phrases in our letter! Keep a look out St Anne's, there's a troll on the loose!

Dear Year 3,

Solihull Council need your help!

There has been a suspicious smell lurking around the bridge by Asda recently. Some people have even said that they have spotted a green creature!

Your head teacher has informed us that he has noticed slime on your playground and we need help identifying if it is the terrible troll!

Could you please get your detective hats on and see if you can spot any clues that this gruesome troll is in Chelmsley Wood and get your teacher to report back to us.

Thank you

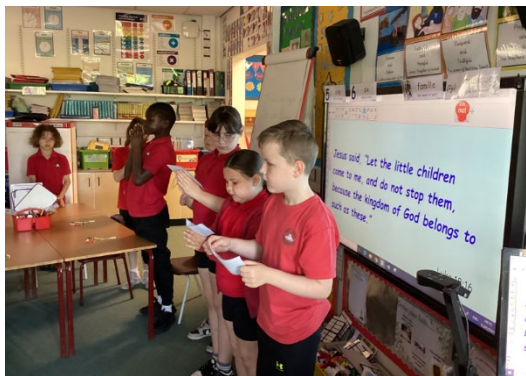
Solihull Council



## YEAR 4

### Prayer and Liturgy - Our Lady of Fatima

This week, we remember Our Lady of Fatima, who appeared to three children in Portugal over 100 years ago. Mary came with a message of love, peace, and prayer. She asked us to pray every day and to love Jesus with our whole hearts. The children led a beautiful Celebration of the Word to reflect upon this special day.



### Maths – Money

This week, we have started a new topic in maths: money. We have been using our knowledge of decimals to support our understanding of money and place value. We have been converting between pounds and pence and partitioning amounts. We are super mathematicians in Year 4!



## YEAR 5

### Celebration of the Word

This week, in Celebration of the Word, Year 5 took part in a beautiful praying in colour session. We thought about who we wanted to pray for and our intentions for the day, using a felt tip pen to draw lines, write names and create symbols that reflect how we feel. The children were so engaged and thought beautifully about their prayer and time with God in their heart. It was a truly beautiful way to begin our day at St Anne's.



### PCSO Visit

On Thursday, the PCSOs came to talk to the children about the age of criminality. The children were so attentive, listening to what they had to say and engaging in the conversation. The PCSOs talked to the children about the risks of engaging in crime, both big and small. We really appreciate the PCSOs coming in and speaking to the children and educating all of us for our future.



## YEAR 6

### PROUD OF YOU!

Year 6 have had an extraordinary week! They have made us all so proud. All week the Year 6 staff have told the children to never give up and try your best – and the children did just that.

In the morning, the children all came together to have a good breakfast, getting our brains ready for the day. This was such a wonderful time for us to come together as a Year Group and relax before we began!



The children have worked tirelessly all week and they have achieved so much! SATS are a snapshot of their year so far and they have shown us all what amazing children they are! We couldn't be more proud! Have a restful weekend all, you deserve it!



#### TEN TEN RELIGIOUS EDUCATION NEWSLETTER

Please see link below for the monthly TenTen R.E Newsletter. The information shared on this newsletter links to the children's Collective Worship in class.

[www.tentenresources.co.uk/prayers-for-home/parent-newsletter/](http://www.tentenresources.co.uk/prayers-for-home/parent-newsletter/)

#### ST ANNES & ST ANTHONYS CHURCH PARISH NEWSLETTER

Please find a link below to the Parish Newsletter which you can find on our website.

<https://www.stannessolihull.co.uk/spring2025>

#### ONLINE SAFETY TIP OF THE WEEK

##### How to best use location tracking apps within your family

Location tracking gives us the ability to see where somebody is via their smart device and is often one of the reasons children receive their first device.

Internet Matters have published an article discussing location tracking, including the benefits and risks and provide links to other supporting resources. You can read the article

here: <https://www.internetmatters.org/hub/expert-opinion/how-to-use-locationtracking-apps-in-your-family/>

#### HEAD TEACHER ACADEMIC AWARDS OF THE WEEK

RH – Wren S	RL – Oliver B	1I – Harper K	1OC – Emilia C	2B – Julian B
2R – Matthew R	3L – Ralphie D	3R – Brogan K	4P – Isaac B	4OR – Tiffany M
5R – Owen O	5T – Joseph-John	6M – Whole class	6N – Whole class	

### HEAD TEACHER EFFORT AWARDS OF THE WEEK

RH – Ruth T	RL – Harry D	1I – Olisa E	1OC – Whole class	2B – Tamilore O
2R – Harry M	3L – Lyla-Rose	3R – Sofia F	4P – Dana-Grace	4OR – Lenai D
5R – Niamh W	5T – Kyla M	6M – Whole class	6N – Whole class	

### OUTSTANDING VIRTUE AWARD – ‘COMPASSIONATE & LOVING’

RH – Abifoluwa	RL – Tallulah NM	1I – Thomas H-D	1OC – Autumn O	2B – Harryson C
2R – Harper H	3L – Joseph B	3R – Arthur I	4P – Ava B	4OR – Anh B
5R – Ulysse J	5T – Evelyn M	6M – Jack W	6N – Harrison F	

### LUNCH TIME MENU FOR W/C 19<sup>TH</sup> MAY

**FOOD FESTIVAL**  
By Aspens

**LUNCH TIME**

Spring Summer 2025  
28/04/25, 19/05/25, 09/06/25, 30/06/25, 21/07/25, 11/08/25, 01/09/25, 22/09/25, 13/10/25

**TRADITIONAL**  
Week 2

**DAILY SANDWICHES AVAILABLE**

**DAILY SALAD BOWL, FRESHLY BAKED BREAD, YOGHURTS AND CUT FRUIT AVAILABLE DAILY**

**PASTA TWIRLER**  
AVAILABLE EVERY DAY  
Topped Pasta  
Hot Pasta topped with Homemade Tomato Sauce & Cheese

**W1**

Day	The Main Event	Meat-Free Magic	Rainbow Alley	Big Topping	Dessert Trolley
Monday	Beef Bolognese Pasta	Cheese and Potato Pie	Sweetcorn and Peas	Beans, Cheese or Tuna Mayo	Jam Sponge and Custard
Tuesday	BBQ Chicken Wraps and Paprika Wedges	BBQ Veggie Wrap and Paprika Wedges	Peas	Beans, Cheese or Tuna Mayo	Banana Muffin
Wednesday	Roast Gammon, Skin on Roasties and Gravy	Maple Roasted Sweet Potato Filo Pie with Skin on Roasties	Mixed Greens	Beans, Cheese or Tuna Mayo	Oaty Cornflake Crunch Bar
Thursday	Sausage and Mash with Gravy	Veggie Sausage and Mash	Carrots and Green Beans	Beans, Cheese or Tuna Mayo	Apple Sponge Pudding with Custard
Friday	Battered Fish and Chips	Cheese and Onion Burger with Chips	Baked Beans	Beans, Cheese or Tuna Mayo	Vanilla Cookie

### COMMUNICATION WITH SCHOOL

For queries such as reporting children's absence, requesting information or other general questions, please contact us via [parentmail@st-annes.solihull.sch.uk](mailto:parentmail@st-annes.solihull.sch.uk). This is a dedicated parent email address which is monitored throughout the day. Messages sent here will be sent on to the relevant staff member(s) if necessary.

If you have any queries at all or if it is an urgent message, please do not hesitate to contact the School Office on 0121 779 8060

## TERM DATES 2024-2025

<u>Spring Term 2025</u>	<u>Summer Term 2025</u>	<u>Autumn Term 2025</u>
<p style="color: red; margin: 0;"><u>Spring 1</u></p> <p style="background-color: yellow; margin: 5px 0;"><b>Monday 6<sup>th</sup> January 2025 – INSET</b> <b>Children NOT in school</b></p> <p>Starts: Tuesday 7<sup>th</sup> January Children return to school</p> <p style="text-align: center;"><b>Half-Term:</b> Monday 17<sup>th</sup> February to Friday 21<sup>st</sup> February</p> <p style="background-color: yellow; margin: 5px 0;"><b>Monday 24<sup>th</sup> February – INSET</b> <b>Children NOT in school</b></p> <p style="color: red; margin: 10px 0;"><u>Spring 2</u></p> <p>Starts: Tuesday 25<sup>th</sup> February Children return to school</p> <p style="text-align: center;"><b>Easter Holiday:</b> Monday 14<sup>th</sup> April to Friday 25<sup>th</sup> April</p>	<p style="color: red; margin: 0;"><u>Summer 1</u></p> <p>Starts: Monday 28<sup>th</sup> April Children return to school</p> <p>Monday 5<sup>th</sup> May – Bank Holiday</p> <p style="text-align: center;"><b>Half-Term:</b> Monday 26<sup>th</sup> May to Friday 30<sup>th</sup> May</p> <p style="color: red; margin: 10px 0;"><u>Summer 2</u></p> <p>Starts: Monday 2<sup>nd</sup> June Children return to school</p> <p>Last Day of Term for Children: Friday 18<sup>th</sup> July</p> <p style="background-color: yellow; margin: 5px 0;"><b>Monday 21<sup>st</sup> July – INSET</b> <b>Children NOT in school</b></p> <p style="text-align: center;"><b>Summer Holidays:</b> Start Tuesday 22<sup>nd</sup> July</p>	<p style="color: red; margin: 0;"><u>Autumn 1</u></p> <p style="background-color: yellow; margin: 5px 0;"><b>Monday 1<sup>st</sup> September and Tuesday 2<sup>nd</sup> September – INSET</b> <b>Children NOT in School</b></p> <p>Starts: Wednesday 3<sup>rd</sup> September Children return to school</p> <p style="background-color: yellow; margin: 5px 0;"><b>Friday 24<sup>th</sup> October – INSET</b> <b>Children NOT in School</b></p> <p style="text-align: center;"><b>Half-Term:</b> Monday 27<sup>th</sup> October to Friday 31<sup>st</sup> October</p> <p style="color: red; margin: 10px 0;"><u>Autumn 2</u></p> <p>Starts: Monday 3<sup>rd</sup> November Children return to school</p>

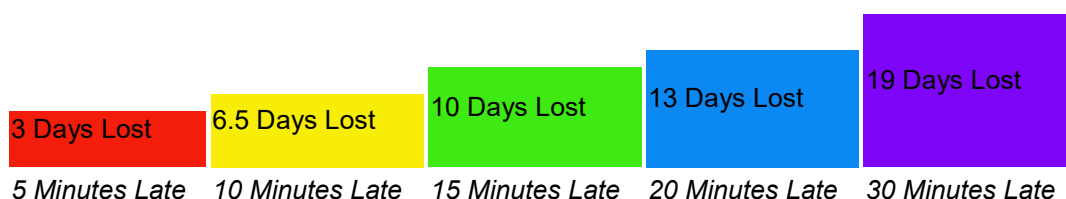
## ATTENDANCE

### Late marks and Absences

The doors open for children in Reception to Year 6 at **8.30am** and close at **8.40am**. Children who arrive after this time must go to the School Office where they will be given their late mark. Late marks are monitored and recorded. Children who arrive from 9.10am onwards are marked on the register as a 'U' for unauthorised absence, unless they are absent due to a medical appointment. Children arriving at the School Office prior to 9.10am will receive a late mark, 'L' on the register.

**8.40am-9.10am** = 'L', which means that your child receives a late mark. We are required to put a reason on the register for children who are late so office staff will always ask for a reason. If it is a personal/confidential reason please just say so; staff will make a note of this.

**9.10am and beyond** = 'U', which means the morning is recorded as an unauthorised absence



(Over one academic year)

### Attendance and Holidays –

**Children Absent:** If your child is absent from school it is necessary that you contact school on the first day of your child's absence. Contact 0121 779 8060 and choose option 1 before the start of the day. There is an answer phone facility for you to leave your child's name, class and reason for absence. Alternatively, you can email school with your child's reason of absence: [parentmail@st-annes.solihull.sch.uk](mailto:parentmail@st-annes.solihull.sch.uk)

Following previous correspondence, this reminds you again that all holidays are unauthorised and the Local Authority will fine parents regardless of when holidays are booked because the ruling has always been in place. This is a Local Authority decision; the School cannot over-ride their decision.

## DATES FOR YOUR DIARY

Mon. 12 <sup>th</sup> – Thurs 15 <sup>th</sup> May	-	<b>SATS Week</b>
<b>Thursday 22<sup>nd</sup> May</b>		<b>Kenelm Trust Meeting at 8.50am</b>
Mon 26 <sup>th</sup> May – Fri 20 <sup>th</sup> May	-	<b>Half Term</b>
<b>Monday 2<sup>nd</sup> June</b>	-	<b>Children return to school – Start of Summer Term 2</b>
w/c Monday 9 <sup>th</sup> June	-	Year 5 Bikeability
<b>Wed 18<sup>th</sup> – Fri 20<sup>th</sup> June</b>	-	<b>Kenelm Trust (formerly Alton castle) residential trip</b>
<i>Monday 21<sup>st</sup> July</i>	-	<i>INSET Day – Children NOT in school</i>
<b>Tuesday 22<sup>nd</sup> July</b>	-	<b>Summer Holidays</b>
<b>Monday 1<sup>st</sup> and Tuesday 2<sup>nd</sup> September</b>	-	<i>INSET Day – Children NOT in school</i>
<b>Wednesday 3<sup>rd</sup> September</b>	-	<b>Children return to school – Start of Autumn Term 1</b>
<b>Friday 24<sup>th</sup> October</b>	-	<i>INSET Day – Children NOT in school</i>
Mon 27 <sup>th</sup> October – Fri 31 <sup>st</sup> October	-	<b>Half Term</b>
<b>Monday 3<sup>rd</sup> November</b>	-	<b>Children return to school – Start of Autumn Term 2</b>

## PARENT CARER COFFEE MORNING



Saint Anne's Primary School and  
Solihull Parent Carer Voice



Solihull Parent  
Carer Voice

### Coffee and Chat

**Come and meet the School  
Engagement team from  
Solihull Parent Carer Voice.**

Please come and join us for  
Coffee and a chat. This session  
we will look at Transition and  
what is available over the  
summer holidays. All  
parent/carers welcome



#### Venue

Saint Anne's Primary School -  
Saints building at Saint Anne's  
Primary School entrance is via  
Nineacres Drive only.

#### Date

Wednesday 25<sup>th</sup> June 25

#### Time

9am - 10am