



ST. ANNE'S CATHOLIC PRIMARY SCHOOL

HEADTEACHER: Mr D Linehan

Bosworth Drive, Chelmsley Wood, Birmingham, B37 5DP

Tel: 0121 779 8060 Email: parentmail@st-annes.solihull.sch.uk

Website: <http://www.stannessolihull.co.uk> Follow us on Twitter: @StAnnesCP



St. Anne's Mission Statement: "Each one of us is unique, each one of us is special, because we are created by God's love. May God's love shine on our lives as we care and share and learn together."

Friday 16th January 2026

St Anne's Catholic Primary School

A school that welcome children of all backgrounds and all faiths

School places are available for Nursery and Reception



Ofsted
OUTSTANDING
in all areas



We are open 8am - 6pm to assist families who require childcare.

Please contact school office for admission enquiry



0121 779 8060

www.stannessolihull.co.uk



Link to both OFSTED and CSI reports

[Ofsted Reports and Catholic School report | St Anne's Catholic Primary School](#)
[St. Anne's Catholic School Inspection Report](#)

1. Overall effectiveness – 1 (OUTSTANDING)
2. Catholic Life & Mission – 1 (OUTSTANDING)
3. Religious Education – 1 (OUTSTANDING)
4. Collective Worship – 1 (OUTSTANDING)

St. Anne's Catholic Primary School has been graded "OUTSTANDING" across all areas of the inspection. This is a truly exceptional outcome and a wonderful achievement for our school and school community. This important external validation sits alongside our recent OUTSTANDING Ofsted Report, received and shared in March.

The report is detailed and reflects our mission as a school. Some comments from inspectors include:

- "St. Anne's is a welcoming and inclusive community where every child is known, loved and cared for".**
- "Pupils know they are unique and loved and take immense pride in being part of the school family".**
- "Governors are passionate, committed and highly knowledgeable".**
- "The curriculum is carefully planned and delivered with genuine passion by teachers who are deeply committed to nurturing each pupil's spiritual growth".**

The report also reflects the outstanding offer to pupils at St. Anne's through the expertise, dedication and commitment to Catholic education. This extends to all staff at our school, including teachers, support staff, governors and of course, each and every pupil at our school.

The inspection process was thorough and robust. All aspects of school life were inspected and assessed thoroughly with a focus on the 3 areas of Catholic Life & Mission, Religious Education and Collective Worship.

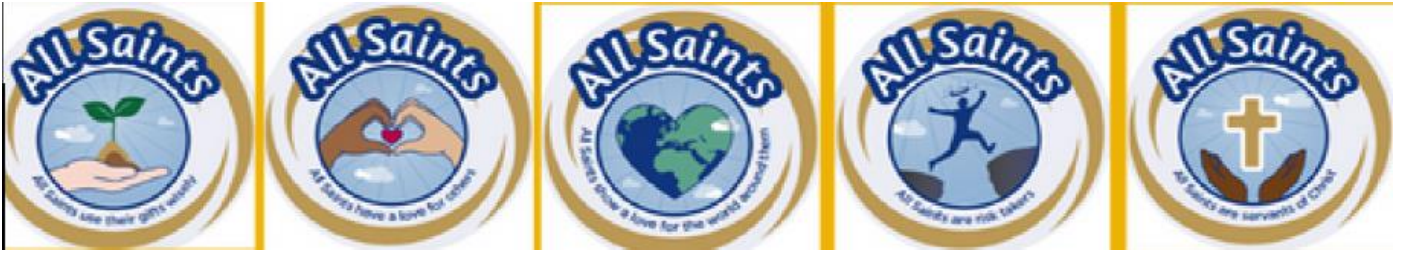
Inspectors observed how **"Christ is at the heart of St. Anne's"** and that **"leaders and Governors have an inspiring vision for outstanding Catholic education and are exceptionally driven to make God known to all"**.

This extends to all staff in school who are devoted to ensuring that your child receives the highest quality Catholic education possible.

This wonderful news places St. Anne's as one of the top performing Catholic schools within the Archdiocese and indeed across the country.

The partnership between home and school is vital to the success of our pupils, and I want to thank you for your trust, encouragement, and commitment. Together, we have ensured that St. Anne's Catholic School continues to thrive and serve future generations. As we move forward, we will continue to build on this success, remaining ambitious for all our pupils, and staying true to our mission to recognise how unique and special our children are.

Thank you once again for your continued support.



School Virtue for this half term – Curious and Active

We encourage the children to be curious in their learning and active in their faith, asking questions, seeking understanding, and putting their beliefs into action through kindness, service, and responsibility to others.

In our Liturgical Calendar we are currently in Ordinary Time (Green).

The half term focus for Catholic Social Teaching is: 'Rights and Responsibilities'

God gives every person rights so they can live with dignity, such as the right to be safe, loved, and educated.

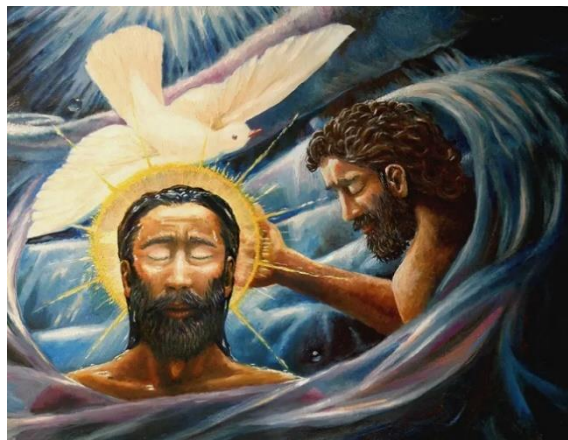
With these rights come responsibilities — to care for one another, to respect others, and to help build a fair and caring community.

When we understand our responsibilities, we learn that our actions matter and that we are called to look after our world and the people in it.

“By recognising both our rights and our responsibilities, we help create a community rooted in respect, justice, and love.”

Baptism of the Lord

This week we celebrated the Baptism of the Lord, which closed the Christmas season and showed Jesus stepping into the Jordan River, reminding us that God meets us right where we are and calls each of us his beloved. As the children reflected on this Gospel, they explored how we are all children of God, and their mission for the week was to create an ID badge that proudly showed this identity—an encouraging reminder that, just like Jesus, we are known, loved, and called to share that love with others.



TEN TEN RELIGIOUS EDUCATION NEWSLETTER

Please see link below for the monthly TenTen R.E Newsletter. The information shared on this newsletter links to the children's Collective Worship in class.

www.tentenresources.co.uk/prayers-for-home/parent-newsletter/

Building the Kingdom Homework



January's Big Question:

How do other faiths and cultures celebrate throughout the year?

As Catholics, we believe God loves everyone. God's Kingdom grows when we live with love and respect. People around the world celebrate in different ways. Learning about these celebrations helps us understand others and build God's Kingdom. E.g. Hindu - Diwali, Jewish - Passover / Yom Kippur, Muslim - Ramadan / Eid - ul - Adha, Sikh - Birthday of Guru Nanak

They may choose one of the following activities:

- Create a poster
- Make an art piece
- Create a presentation or video
- Interview a friend/neighbour

Thank you for supporting your child in Building God's Kingdom.

Please hand your homework in to your class teacher by the end of January



IMPORTANT INFORMATION REGARDING ADMISSIONS FOR SEPTEMBER 2026- DEADLINE 2026

Applications for **Reception** school places for September 2026 must be made via the Council Website: <http://www.solihull.gov.uk/admissions>. If you live outside Solihull you must apply to your local council even if you want to include Solihull schools on your application. **The deadline was 15th January**

Applying for a Nursery school place for September 2026

Please apply for a Nursery pack via email or at the school office.

If your child was born between 1st September 2022 and 31st August 2023 you can apply for 30 hours free Nursery education in a Solihull school starting in September 2026. These applications are now made directly to schools and not via Admissions. St. Anne's application forms are available now. To request one, please send your child's name, date of birth and your name and contact number to: nurseryadmissions@st-annes.solihull.sch.uk. Please type 'Nursery 2026' in the subject line so that we can easily identify your email. We will email an application form to you in due course.

Please note that when you apply for a **Nursery** or **Reception** place we follow the Admissions policy and we can only record your child as Catholic if you have provided a baptismal certificate **before** the closing date for applications. We cannot accept that you intend to get your child baptised, even if the child's siblings are already baptised. Therefore, it is really important that if you are looking to organise a baptism this takes place before the closing dates for admissions. However, we accept children of all faiths at St Anne's.

If you wish your child to be baptised one parent must be a Catholic. If you wish to contact our Parish Priest, his telephone number is 0121 770 3283 or by emailing: stanne-chelmsleywood.bham@rcaob.org.uk

Please see below a polite reminder of the uniform expectations

Children must wear school shoes unless it is their PE day.
Please find the information from the prospectus on the website.
Thank you for your continued cooperation in the matter to ensure our children continue to look smart and in the right uniform.

Shoes

Shoes should be smart black leather type shoes. Fashion shoes, canvas pumps and trainers are not allowed.

Haircuts

At St. Anne's we do not allow extreme haircuts. Similarly, we do not accept boys having shaven heads or tramlines/patterns shaved into their hair, logos or a fashion statement hairstyle is not acceptable.

Girls and boys with long hair (hair long enough to be tied back) must tie their hair back. If children with long hair (hair long enough to be tied back) come to school with loose hair they will be provided with an elastic band so that their hair is tied back for the rest of the day.

YOUNG VOICES



St Anne's Year 4 Choir attended the Young Voices Concert at BP Pulse Live on Monday 12th January.

They have been tirelessly rehearsing every week since September to learn the lyrics for the set songs and perfect the dance moves for some of these. The experience has been incredible, and all the children were inspired and motivated by the power of the music they experienced.

Mrs McGuire has been blown away by the commitment, talent and enthusiasm of each member of the choir at every rehearsal.

At the concert on Monday the children were part of the largest school choir in the world. They sang their hearts out, danced amazingly and thoroughly enjoyed the experience-making it a memorable time for all. Mrs McGuire, Mr McGuire, Miss McGuire and Miss Phelps attended the concert with the choir and were overjoyed at the children's performance and participation. Here are some comments the children made:

'This is the best day of my life'
'I am nervous but so excited to be here'
'I love to sing and dance-I wish we could do it all again'

Well done to every member of the choir- you all shone like the superstars you are and were true ambassadors for St Anne's School- impeccable behaviour, talent and pure joy. Thank you to the parents who supported their child in participating too.



PERSONAL ACHIEVEMENTS

Well done to Tabitha in Year 2 who gained her 1st Degree Black Belt last week!



Well done to Liam in 3TR shared with his class an impressive video of his training at boxing!



Well done to Dhruvi in Year 2 for completing her Sanskrit Language Level 2!



BOOK VENDING MACHINE

Following the discussions with our pupils and listening to their ideas and wishes, we now have a wonderful new Book Vending Machine at St. Annes! Over the coming days it will be shared with all pupils and filled with books.

Totally unique to St. Anne's, our vending machine will hold lots of different books for all ages. The children will have the opportunity to win a gold coin which can be used to choose a book of their choice and our School Councillor representatives will be meeting next week to share ideas from the children in their classes and decide on how best to promote and celebrate the joy of reading at St. Anne's. This coincidentally links with the Government initiative launched this week of the Year of Reading.



Religious Education

In RE this week the Nursery children have been recalling parts of the Nativity story.

Understanding the World

This week the Nursery children continue to learn about the season of winter. They had a surprise visit from Frosty the Snowman and Elsa. The children observed and explored the magic snow, ice and snowballs.



RECEPTION

Religious Education – Christmas

This week we have been working hard to talk about the Nativity story. We had fun working together to sequence the events and discuss each part of the story. We used some fantastic descriptive story language.



Winter

This week the Reception children have been learning about the season of Winter. We had a visit from the Frosty the snowman who spoke to us about the signs of winter and left us some magic ice to play with. We created our own snowman artwork and enjoyed exploring the ice and frost in our outdoor area. We have had a fabulous week and the children have used some wonderful vocabulary linked to the season of Winter.



Maths – Alive in 5!

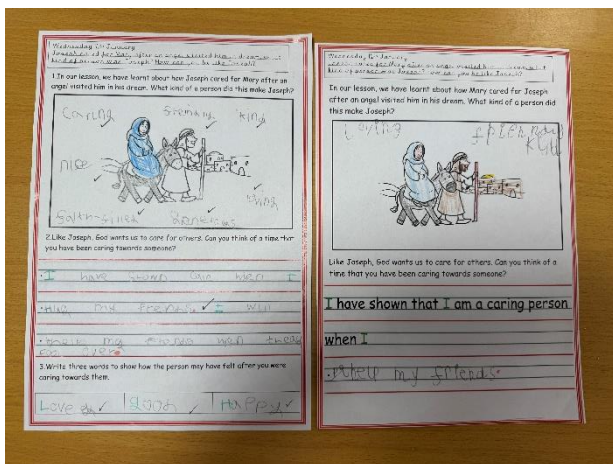
This week in maths we have been practising our reliable counting and our subitising skills. We have learnt a new song where we added one more and had fun acting it out before representing one more on our five frames. We also explored one less and practised subtracting one to find one less.



YEAR 1

Religious Education – Joseph’s Dream

In our RE lessons this week, we have been learning about Joseph’s dream and the important message the angel shared with him. First, we role-played the angel visiting Joseph in his dream and then we discussed how Joseph chose to stay with Mary and become Jesus’ stepfather, showing that he was a caring and faithful man who followed God’s guidance. Reflecting on this, we thought about how we can show care and kindness to others in our own lives, and how these actions can help people feel loved and valued, just as Mary and Jesus would have felt.



Design and Technology – Making Hand Puppets.

This term, we have begun an exciting new unit all about **Making Hand Puppets**. We had great fun exploring different ways to join fabric, including stapling and gluing. We talked about the pros and cons of each method and discovered that stapling was our favourite – it was the most exciting! We each practiced joining pieces of fabric using both glue and staples, which helped us decide which method worked best. We are very excited and can't wait to start making our final hand puppets!

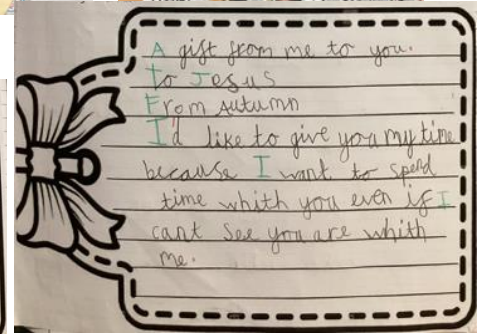
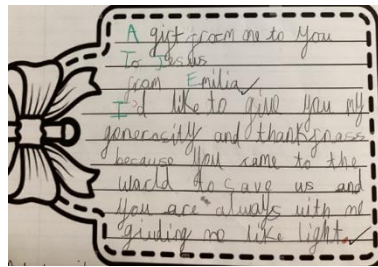


YEAR 2

Religious Education

This week in RE, we continued our work on our Christmas unit. The children explored the story of the Epiphany in more depth, learning what the word *Epiphany* means and why it is an important event. They discussed the special gifts brought by the Wise Men, how the Wise Men knew the star was special and why they followed it, as well as the difficulties they may have faced on their journey.

The children also learned that they can offer gifts to Jesus every day by practising our virtues. To reflect on this, they wrote about a gift they could offer Jesus from their hearts. Here are a few examples, along with the reasons why they chose these gifts.



Maths

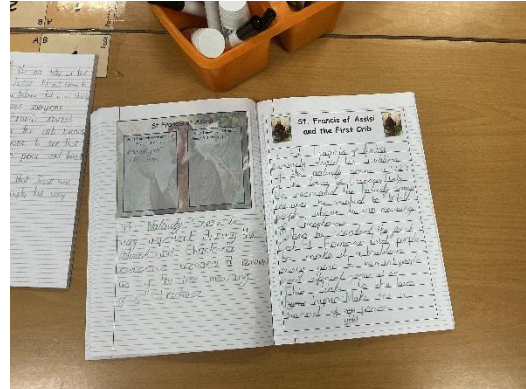
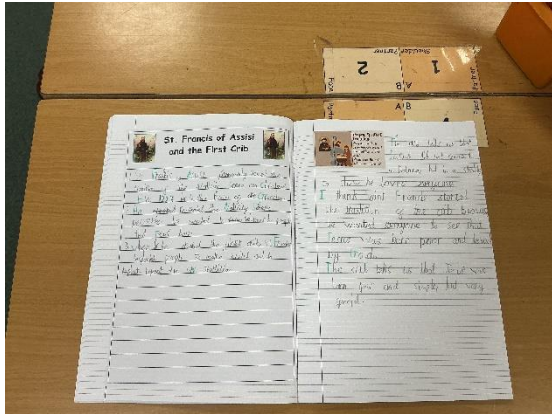
This week in Year 2, we have started our exciting maths topic on shapes. The children have enjoyed exploring a range of different 2D and 3D shapes through fun, practical activities. We played shape games, talked about the names and properties of shapes, and carefully counted how many different shapes we could find around the classroom. The children were great at spotting shapes in everyday objects and explaining what they noticed.



YEAR 3

Religious Education

This week the children have learnt about St Francis of Assisi and the tradition of the crib, which he started. We have considered why this tradition is important and so widely used around the world.



PE

We have started our Outdoor Adventurous Activities unit this week and we have begun with some team building. The children were set some special challenges like organising themselves into height and alphabetical order without stepping off one long skipping rope or bench.

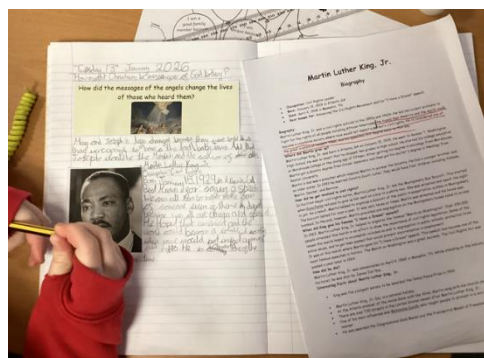


YEAR 4

Religious Education

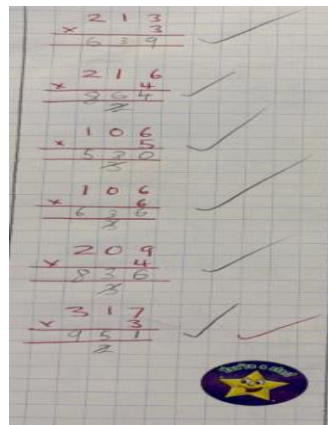
This week, we have learnt about the Christmas story and the important role of messengers such as angels, who brought God's message of hope and good news. From this, the children explored how people today can also be messengers of God by living out values such as kindness, forgiveness, and service to others.

As part of our learning, we studied inspirational individuals including **Martin Luther King Jr.** and **Mother Teresa.** The children learned about how Martin Luther King Jr. stood up for equality and peace, sharing a message of justice and love through non-violent action. They also explored how Mother Teresa dedicated her life to helping the poor and vulnerable, showing compassion and care in her everyday actions.



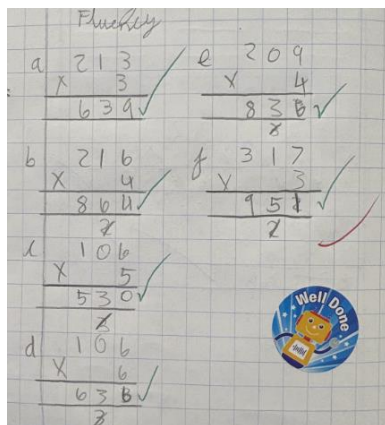
Maths

This half term in Maths, Year 4 have been developing their **multiplication**, with this week having a focus on **numbers by a one-digit number using the column**. The children began by revising place value to ensure they each digit in a number. They then learned how to set out the column method, multiplying each digit step by step, the tens and hundreds. A strong emphasis was placed on layout, and carrying digits correctly. They have been trying wonderfully! Go Year 4!



understanding of **multiplying three-digit method**.

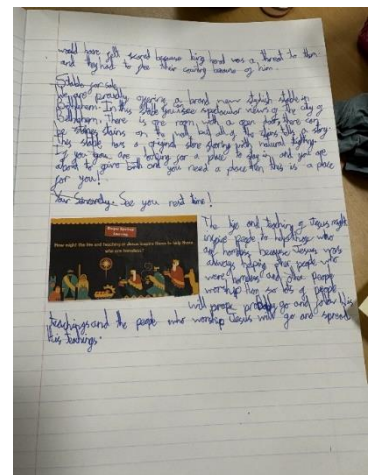
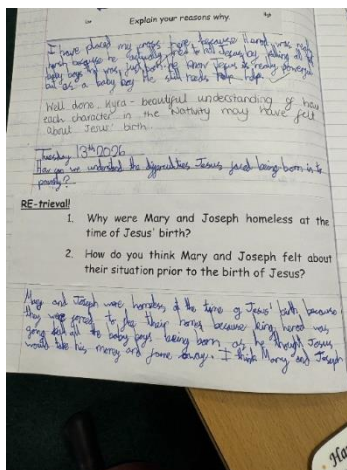
understood the value of calculations clearly using starting with the ones, then accurate calculation, careful so hard and are doing so



YEAR 5

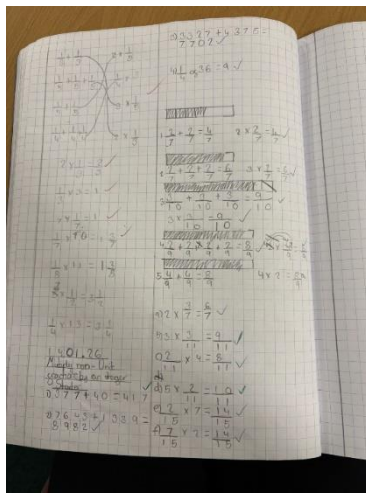
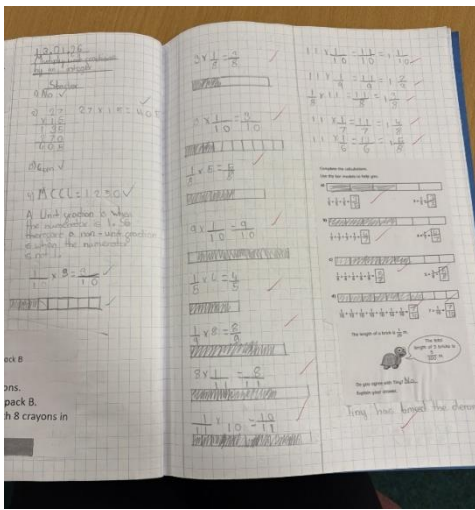
Religious Education

This week in RE we have been continuing with our 'Christmas' unit. The children have used their previous knowledge of Matthew and Luke's Gospels to be able to understand the difficulties Jesus faced being born into poverty. The children then wrote their very own advert, promoting the 'Stable for Sale', to convince Mary and Joseph to come and stay in their stable. We considered how the life and teaching of Jesus might inspire us to help those who are homeless.



Maths

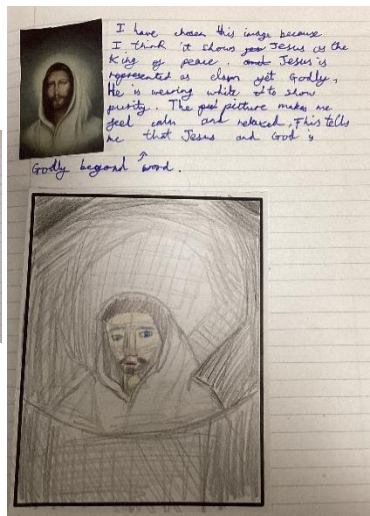
This week in Maths, Year 5 have begun their Fractions unit. We have been looking at multiplying a unit fraction by an integer, multiplying non-unit fractions by an integer, multiplying mixed numbers by an integer and calculating a fraction of an amount. Year 5 have been making brilliant progress, well done!



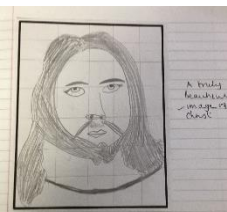
YEAR 6

Religious Education

Year 6 looked and appreciated different representations of Jesus. We looked at how Christ is presented in through scripture and art. We chose our favourite picture of Jesus and reflected on what it means to us.

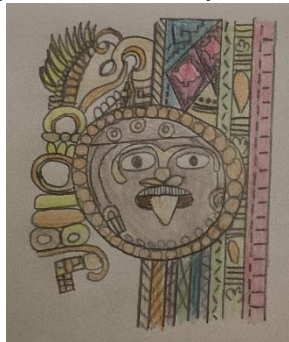
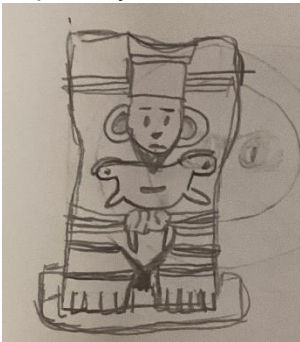


I have chosen this image because Jesus is peaceful and shows his heart to everyone. Jesus is represented by white clothes meaning purity, a red robe, a halo showing his holiness and his humble and pure heart with his hand covering it. His heart has the crucifix of Thomas around it reminding us of sacrifice and pain that he suffered for us. His heart also has a flame on it meaning Jesus is the Holy Spirit. This picture makes me feel loved and warm inside. This tells me that Jesus is always willing to love and care for us.



Art and Design

Our Year 6 artists collected information to identify the key features of Maya art. They were inspired by a Mexican artist called Diego Rivera, who is known for creating large murals, or wall paintings. They drew different patterns and were inspired by the different colour ideas from Mayan art – just as Rivera may have done.



ST ANNES & ST ANTHONYS CHURCH PARISH NEWSLETTER

Please find a link below to the Parish Newsletter which you can find on our website.
<https://www.stannessolihull.co.uk/autumn-2025>

HEAD TEACHER ACADEMIC AWARDS OF THE WEEK

- | | | | | |
|---------------------|---------------|------------------|----------------|--------------|
| RH – Renley L | RL – Ethan MR | 1P – Daniella M | 1OC – Yara S | 2B – Esmae E |
| 2M – Gracie Goode-P | 3TR – Leo O | 3SR – Ava-Rose D | 4P – Michael K | 4R – Norah K |

HEAD TEACHER EFFORT AWARDS OF THE WEEK

RH – Noah H-D	RL – L'Mayah R	1P – Frank L	1OC – Ella D	2B – Dhrtuti J
2M – Elikia M	3TR – Amaya T	3SR – Dale H	4P – Phoebe T	4R – Albie T
5S – Zachary H	5T – Petal M	6M – Sofia H	6N – Sibeal R	

OUTSTANDING VIRTUE AWARD – 'LEARNED & WISE'

RH – Reggie D	RL – Dominik K	1P – Kian T	1OC – Harry D	2B – Reuben K
2M – Gabi H	3TR – Delilah M	3SR – Tamilore O	4P – Lottie C	4R – Noah D
5S – Frankie P	5T – Franc B	6M – David Z	6N – John B	

COMMUNICATION WITH SCHOOL

For queries such as reporting children's absence, requesting information or other general questions, please contact us via parentmail@st-annes.solihull.sch.uk.

Please be aware that a reply may take up to 3 working days.

If you have any queries at all or if it is an urgent message, regarding a matter of Safeguarding please do not hesitate to contact the School Office on 0121 779 8060

SCHOOL NOTICES

Please remember that there is no parking available in the School grounds or outside the school gates for families. All families are expected to park at Asda or the Church when bringing children to/collecting children from school. This also applies when bringing children to school late, collecting early or dropping things off for them.

The on-site car park is for school staff and external visitors.



Please do not use the approach to school as a drop off point as this leads to congestion and can be very dangerous for pedestrians. The school does not own this land or the parking spaces outside of the school gates.

It has come to our attention that some parents and family members are parking inconsiderately on double yellow lines, across driveways of local residents or on pavement and walkways where children and families are walking to school. Please can we ask that parents park considerately and appropriately outside of school in order for all young children to access and enter school safely.

ONLINE SAFETY TIP OF THE WEEK

Cyber security

Cyber security is the process of protecting your information and data whilst online against scams and cyberattacks. Cyber-attacks are the process of maliciously targeting individuals or organisations to disable networks or steal data for example. The National Cyber Security Centre (NCSC) have an area on their website with guidance to help protect you and your family. The guidance includes how to manage your digital footprint online, information about anti-virus software as well as top tips for staying online such as:

- Using a strong password
- Setting up 2step verification

You can find the resources here: <https://www.ncsc.gov.uk/section/advice-guidance/you-your-family>

The NCSC also provide advice on what you should do if you are the target of a scam or cyber-attack. Find out more here: <https://www.ncsc.gov.uk/section/respond-recover/you>

<p style="text-align: center;"><u>Spring 1</u></p> <p>Starts: Tuesday 6th January 2026</p> <p>Last Day of Term for Children: Friday 13th February</p> <p style="text-align: center;">Half-Term: <i>Monday 16th February to Friday 20th February</i></p> <p style="text-align: center;"><u>Spring 2</u></p> <p style="text-align: center;">Monday 23rd February – INSET Children NOT in School</p> <p>Starts: Tuesday 24th February Children return to school</p> <p>Last Day of Term for Children: Friday 27th March</p> <p style="text-align: center;">Easter Holidays: <i>Monday 30th March to Friday 10th April</i></p>	<p style="text-align: center;"><u>Summer 1</u></p> <p>Starts: Monday 13th April Children return to school</p> <p style="text-align: center;">Bank Holiday: Monday 4th May</p> <p>Last Day of Term for Children: Friday 22nd May</p> <p style="text-align: center;">Half Term: <i>Monday 25th May to Friday 29th May</i></p> <p style="text-align: center;"><u>Summer 2</u></p> <p>Starts: Monday 1st June Children return to school</p> <p>Last Day of Term for Children: Friday 17th July</p> <p style="text-align: center;">Monday 20th July – INSET Children NOT in School</p> <p style="text-align: center;">Summer Holidays Starts: Tuesday 21st July</p>
--	---

TERM DATES 2025-26

DATES FOR YOUR DIARY

Mon 16th February – Fri 20th February	-	Half Term
<i>Monday 23rd February</i>	-	<i>INSET DAY – Children NOT in school</i>
Tuesday 24th February	-	Children return to school – Start of Spring 2
W/c 23rd Feb	-	Year 6 Residential Trip to Alton Castle
Tues 24th Feb – Fri 27th Feb	-	Year 5 Bikeability

Mon 30 th March – Fri 10 th April	-	Easter Holidays
Monday 13 th April	-	Children return to school – Start of Summer 1
Monday 4 th May	-	Bank Holiday (Children NOT in school)
Mon 25 th May – Fri 29 th May		Half Term
Monday 1 st June	-	Children return to school – Start of Summer 2
Friday 17 th July	-	Last Day of Term for children
Monday 20 th July	-	Summer Holidays (Inset day for staff- children not in school)

SOLIHULL SCHOOL NURSING NEWSLETTER

PRIMARY SCHOOLS WINTER 2026, D&HP13



NHS
South Warwickshire
University
NHS Foundation Trust

SOLIHULL SCHOOL NURSING NEWSLETTER

PAGE 1

HAPPY NEW YEAR! 2026

Happy New Year from the entire School Nursing Team!

We hope that everyone enjoyed a lovely festive break and is now settling back into the school routine.

The school nursing service operates **Monday to Friday, 9 am - 5 pm**, excluding public and bank holidays. You can reach us using the contact details provided below:

Phone: 0121 726 67 54

Or text us via ChatHealth
Parent Line: 07480 635496

Here's a reminder of what the School Nursing team can support you with:

- Toileting
- Sleep
- Challenges with eating and diet
- Delivering the NCMP for Reception and Year 6 pupils
- Puberty
- Emotional/Mental health
- Managing behaviour
- Hygiene



Winter Water Safety

Cold weather makes rivers, canals and ponds more dangerous. If you're out walking, remember:

- Stay off the ice
- Keep back from the edge
- Keep children and dogs close
- In an emergency, call 999
- If you fall in: float on your back & shout for help.

Stay safe this winter

More tips:

[Royal Life Saving Society UK](https://www.royallifesaving.org.uk/)



Staying Active During the Winter



Keeping children active during winter can be tricky, but it's important for their overall health and happiness. Regular movement improves both mind and body.

Here are some tips to help make exercise more fun during the colder months:

- **Winter Scavenger Hunt** - Search for animal tracks and wildlife.
- **Plan a Snack Break** - Bring along some hot chocolate or warm milk, along with a healthy snack.
- **Go Geocaching** - www.geocaching.com
- **Winter Crafts** - Collect items for a winter potion or winter-themed arts and crafts.

For more ideas, check out the Woodland Trust website:
[9 Fun Ideas for Family Winter Walks - Woodland Trust](https://www.woodlandtrust.co.uk/fun-ideas-for-family-winter-walks-woodland-trust)

Can't Get Outdoors?

Movement and exercise can be done indoors using online resources, creating obstacle courses, or simply turning on some music for dancing.

Here are some helpful online resources:

- [Activities for Kids - NHS Healthier Families](https://www.nhs.uk/healthier-families/)
- [Activate with Joe - YouTube - https://youtube.com](https://www.youtube.com/watch?v=...)

For more support with exercise and healthy living for your family, visit the [Solihull On the Move](https://www.solihullonthe-move.co.uk/) website.

Free Online Learning for Families from **TOGETHERNESS**

Solihull Metropolitan Borough Council offers families free access to Togetherness resources for family wellbeing. Parents, carers, grandparents, and young people can learn from NHS experts and other parents to better understand and manage emotions. Visit the [Togetherness](https://www.togetherness.org.uk/) website and use the access code: **applejacks** for more information.

PRIMARY SCHOOLS WINTER 2026, D&HP13



NHS
South Warwickshire
University
NHS Foundation Trust

SOLIHULL SCHOOL NURSING NEWSLETTER

PAGE 2

Awareness Days January to March 2026



Children's Mental Health Week

[Place2Be's Children's Mental Health Week 2026](https://www.place2be.org.uk/) is due to take place 9th - 15th February 2026. This year's theme is "This is My Place" which is all about highlighting how important it is to support the people and systems around our children so they can grow up in welcoming, supportive environments where they feel like they truly belong and can say, "This is My Place".

Eating Disorders Awareness Week

[Eating Disorders Awareness Week](https://www.eatingdisordersawarenessweek.org.uk/) runs from Monday, 23rd February to Sunday, 1st March 2026. It focuses on the loneliness experienced by children and young people dealing with eating disorders. BEAT emphasises the importance of community, family, and support networks in helping individuals feel supported and understood as they work towards recovery.

National Storytelling Week

[National Storytelling Week](https://www.nationalstorytellingweek.org.uk/) takes place from 1st - 9th February to celebrate storytelling and is organised by the Society for Storytelling. The week aims to encourage the sharing of stories and the impact they can have. Storytelling has lots of benefits for children, giving a learning opportunity about things such as kindness and bravery. It helps children understand emotions by encouraging feelings like laughter and sadness. It can also enhance imagination and creativity, and give you wonderful bonding opportunity with your children.



Cold Weather & Child Health



Colder weather can affect children's health, particularly those with asthma, eczema, or other long-term conditions. Here are some tips to keep in mind:

- **Hydration and Nutritious Meals** - Help children stay comfortable by keeping them hydrated and eating healthy.
- **Indoor Temperature** - Remember to keep indoor temperatures at least 18°C to create a comfortable and cosy environment.
- **Layer Clothing** - Dress children in layers for their journey to and from school.
- **Warm Accessories** - Dress them in warm coats, gloves, and hats.
- **Ventilation** - Ensure proper ventilation while keeping spaces warm.

Health Awareness

Be mindful of when your child should stay at home and keep children home if they have:

- A high temperature
- Vomiting or diarrhoea (must be symptom-free for 48 hours before returning)
- Are too unwell to take part in normal school activities.

Asthma, Eczema & Winter Conditions

Cold air and indoor heating can make symptoms worse. Things to remember...

- **Inhalers:** Ensure that inhalers are up-to-date and accessible at school.
- **Eczema Management:** Moisturise skin regularly to manage eczema.
- **Asthma Care:** Illness can trigger asthma flare-ups, so quick management is essential.

For more information, visit: [ukhsa.blog.gov.uk/a-parents-guide-to-keeping-kids-healthy-this-school-year/](https://www.ukhsa.blog.gov.uk/a-parents-guide-to-keeping-kids-healthy-this-school-year/)



[solihullschoolnurses](https://www.solihullschoolnurses.org.uk/)



[solihull_school_nurses](https://www.instagram.com/solihull_school_nurses/)

Linktree

linktr.ee/solihullschoolnursing



[SolSchNurses](https://twitter.com/SolSchNurses)

ChatHealth

Parent line: 07480 635496

Aged 11-19: 07520 615730

BIG BRUM YOUTH THEATRE

Big Brum Theatre-in-Education is starting a **FREE** Youth Theatre – ‘Little Brum’ - for the young people of North Solihull. We have recently visited your child’s school, exploring with them the story of ‘The Little Red Cap’, and they were amazing, creative and imaginative. This is why we are starting our ‘Little Brum’ and hope your child will wish to be part of it.

Any local year six child is welcome to come along. We will be engaging our imaginations, exploring stories and making theatre together.

Please contact katie@bigbrum.org.uk to sign up or for further information.



Little Brum Youth Theatre
Open to all Year 6 children

Big Brum Theatre in Education
Innovation in Action

Every Wednesday
17:30 to 18:30
Starting 14th January 2026

Elmwood Family Hub, 37 Burton's Way,
Birmingham, B36 0UG

Please email katie@bigbrum.org.uk
to sign up or for further details

SISS AUTISM TEAM PARENT WORKSHOP

Children's Services and Skills Directorate
SiND 0-25 Service
Specialist Inclusion Support Service
Autism Team



Children's Services and Skills Directorate
SiND 0-25 Service
Specialist Inclusion Support Service
Autism Team



SISS Autism Team Parent Workshop.

Understanding Autism for Parents of school-aged children.

The SISS Autism Team are pleased to offer a workshop for parents and carers of children in Solihull Mainstream Schools with an autism diagnosis, or who have been accepted for an autism assessment.

The workshops use the key elements of the [Autism Education Trust Making Sense of Autism](#) training module that is delivered to all schools in Solihull, developing this knowledge and understanding to meet the needs of the family.

The workshops are delivered by experienced Specialist staff from the SISS Autism Team, all of whom are licensed by AET to deliver the training.

The aims of the workshops are to:

- Introduce the current understanding of autism and the 3 areas of difference.
- Develop your understanding of your child’s individual profile of strengths and support needs.
- Identify a range of strategies that may support your child and wider family.
- Know what support is available in school and develop a shared understanding of the approaches and language to support working together with your child’s school.
- Signposting to wider services and offers in our local area.

You will receive a range of practical resources for use at home following each session, plus a certificate directly from AET upon completion of the workshop.

The workshops are repeated each school term and are delivered in Family Hubs in North Solihull, Central Solihull & South Solihull, plus one online opportunity.

You can choose the option that works best for you – all dates and venues are available to book now. Please see below for details.

Please do not attend if you have not completed the booking form below and received a confirmation email.

Eligibility to attend the workshop:

- Your child has an autism diagnosis **or** has been accepted onto the waiting list for an assessment.
- Your child attends a mainstream school in Solihull.
- You can attend both face-to-face days.

Spring term

North – Riverside Family Hub – 21.4.26 & 28.4.26. 9.00am – 3pm

Final Teams Online session – 1.5.26. 9am – 12pm

Summer term

South – Shirley Heath Family Hub – 2.6.26 & 9.6.26. 9am – 3pm.

North – Riverside Family Hub – 2.6.26 & 9.6.26. 9am – 3pm.

Online – via Microsoft Teams – 8.5.26, 15.5.26, 22.5.26, 5.6.26. 9am – 12pm

Final Teams Online session – all 3 groups – 12.6.26. 9am – 12pm

If you have not previously attended a workshop with us and would like to join us, please complete the Booking Form here: [Autism Parent](#)

[Workshops Booking Form – Fill in form](#)

and we will confirm your place via email.

For any queries, please contact your school SENCo.

Early Years Team SEND Conference

Elmwood Family Hub

9:30 AM – 12:30 PM, Wednesday 22nd April

This event is designed for Solihull parents of children under 5 with any form of SEND, as well as professionals working with young children in Solihull—including those in nurseries, schools, or working as childminders.

Drop in for a chance to speak with Solihull's professional teams, ask questions, and receive face-to-face advice. You can also attend a series of workshops covering key early years SEND topics and make use of the Family Hub facilities. Play equipment will be available for parents bringing young children (please note: children must be supervised at all times).

Professionals who will be available to talk to:

The Early Years Team	SENDIAS
The Educational Psychology Service	Occupational Therapy
Solihull Parent Carer Voice	Speech and Language Therapy Team
EPAS	Health Visitors
The EHCP Team	Virtual Schools
SISS SPI Team and Autism Team	School Admissions Team
Solihull Family Information Service	

A series of workshops will be available on a first-come, first-served basis. A sign-up sheet will be provided on the day. We will also have training on screens to watch in your own time.

Workshops:

- 10:00 – 10:30 Introduction to Makaton: A practical taster session – Anthony Hemphill
- 10:30 – 11:00 Toileting Approaches for Children with SEND – Sarah Phelan
- 11:00 – 11:30 The Importance of Physical Play on Development – Laren Freemantle
- 11:30 – 12:00 Sensory Processing and Using Sensory Trails – Jane Glassey

Drinks and refreshments will be available on the day.

We put children and young people
at the heart of everything we do